

# Northeast Area School Response Plan



Vinita, Ketchum, Bluejacket,  
Welch, Afton and Cleora  
Public Schools

# Table of Contents

<b>Table of Contents</b>	<b>2</b>
<b>Daily Screening</b>	<b>2</b>
<b>At School Procedures</b>	<b>3</b>
Isolation Area	3
Returning to School	3
Without COVID testing,	3
With a negative COVID test,	3
<b>Positive Case Protocol</b>	<b>4</b>
<b>District Wide</b>	<b>4</b>
<b>General Classroom Requirements for All Teachers</b>	<b>4</b>
<b>Bus Transportation</b>	<b>5</b>
<b>Decision Tree for Response to Exposure</b>	<b>6</b>
<b>Decision Tree for School Closure Decisions</b>	<b>7</b>
<b>Covid Daily Health Screening Checklist</b>	<b>8</b>
Students and staff should be screened each morning using the following questions:	8

## Daily Screening

1. A daily screening guideline for parents is provided in this document; if a child attends school, they are certified healthy. Some districts may check temperature upon arrival and/or throughout the day.
2. All staff will be required to use the attached daily screening guideline; if a staff member is present at school, they are certified healthy.

# At School Procedures

## Isolation Area

Any student or staff member who exhibits a fever of at least 100 degrees or any COVID related symptoms (listed on the daily screening checklist) will be instantly isolated in a predetermined isolation area and sent home immediately.

## Positive Case Protocol District Wide

1. Consult with the county Health Department to begin contact tracing steps.
2. Send information to parents and staff that a district closure will be activated for at least 48 hours.
3. Begin sanitation process of all buildings and buses.
4. Using the data provided from the health department and the attached flow chart, a determination will be made on reopening and a public announcement made.
5. All students will be put on distance learning during the 48 hour closure.
6. Child nutrition meals will be provided during this time. Details will be district specific.

## Return to School After Exclusion

Once a student/staff member is excluded from school, they may return if they meet the requirements listed below.

1. **UNTESTED**: Have not received a test proving or disproving COVID-19, but did experience symptoms may return if all 3 conditions below are met
  - At least 10 calendar days have passed since symptoms first appeared, AND
  - Fever free (without the use of fever-reducing medication) for 72 hours, AND
  - Symptoms have improved
  
2. **TESTED AND AWAITING RESULTS**: Persons who are suspected of having COVID-19 and are awaiting test results should be isolated at home until test results are received.
  
3. **POSITIVE RESULT**  
***Symptomatic Cases*** may return if the following conditions are met:
  - 10 Calendar days have passed since symptoms first appeared, **AND**
  - Fever free (without the use of fever-reducing medication) for 72 hours, **AND**
  - Symptoms have improved  
***Asymptomatic Cases*** may return if the following conditions are met:
  - 10 Calendar days have passed since the date sample was collected, **AND**
  - Symptoms have not developed
  - If symptoms develop during the 10 isolation period, then follow the above criteria for symptomatic cases with a new isolation period starting from the day symptoms started.
  
4. **NEGATIVE RESULT**
  - Known exposure to a COVID-19 case - must be quarantined for 14 days. A negative test result within the 14 day quarantine period does NOT change the quarantine period, therefore, the person must finish their 14 days.
  - No known exposure to a COVID-19 case- may return to work or school

**Once the above requirements are met, parents are expected to accompany their student(s) to the site office to be cleared to return to class.**

\*\*more information at

<https://www.cdc.gov/coronavirus/2019-ncov/if-you-are-sick/end-home-isolation.html>

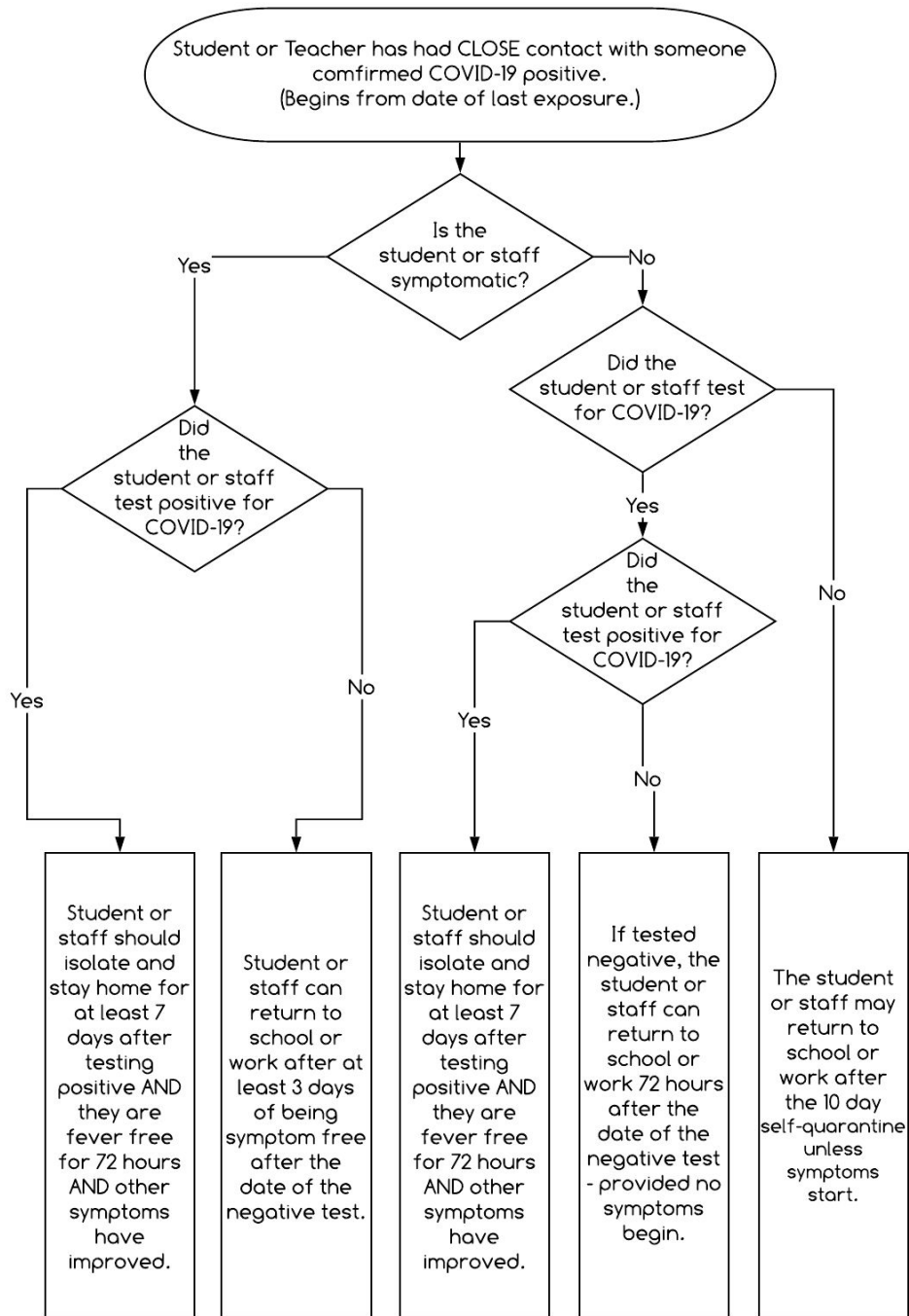
## General Classroom Requirements for All Teachers

- Maximize classroom space (remove reading nooks, center areas, etc.)
- One directional seating whenever possible.
- Mandatory Seating Charts in all classrooms and cafeteria.

## Bus Transportation

- Families are encouraged to provide transportation for their students if possible.
- Maximize airflow by opening windows, weather permitting.
- Required seating chart.
- Students and bus drivers may be required to wear a facial covering. Local policy will determine types of appropriate facial covering.
- Additional bus routes as applicable to individual districts.

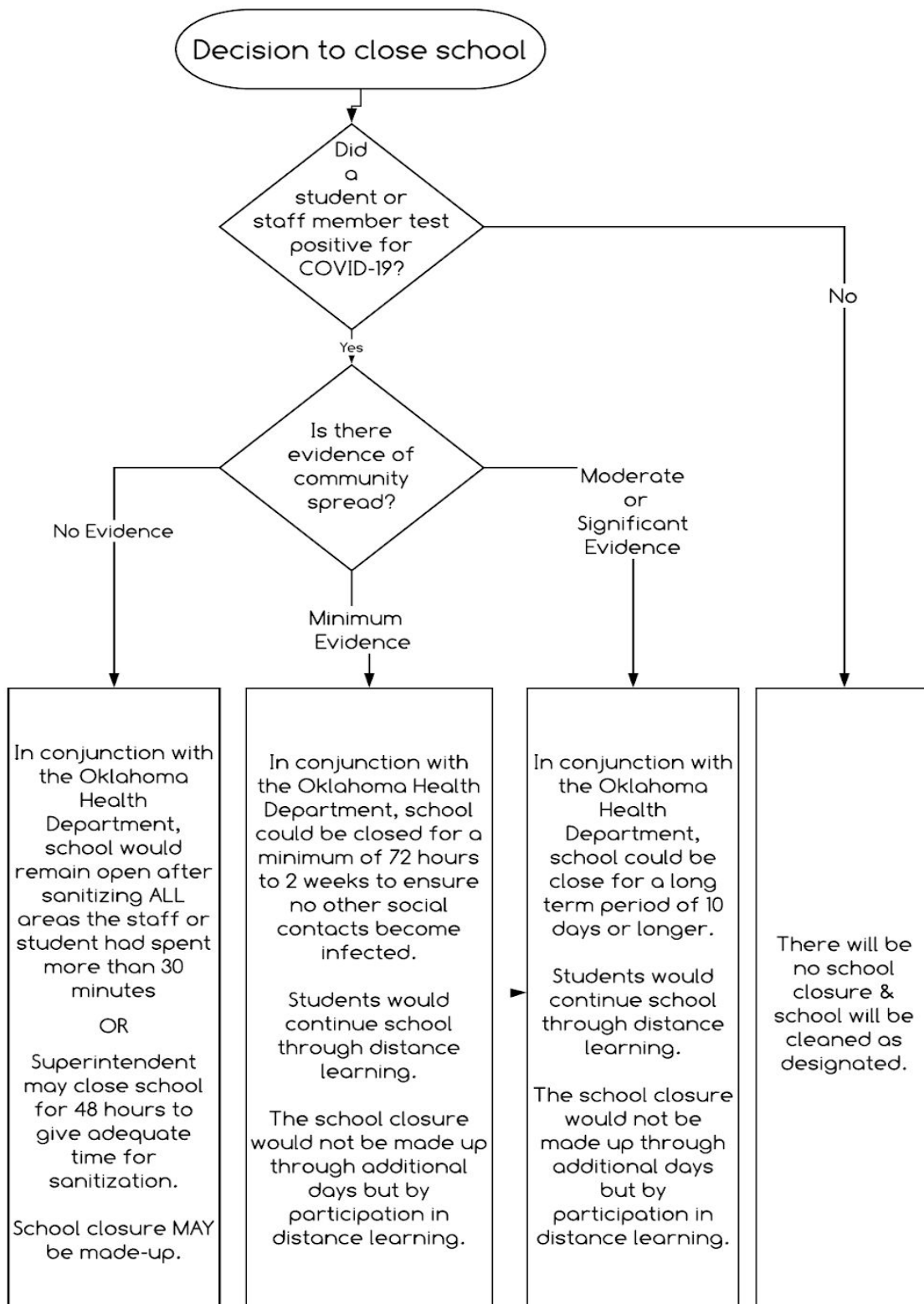
# Decision Tree for Response to Exposure



\*\*more information at

<https://www.cdc.gov/coronavirus/2019-ncov/if-you-are-sick/end-home-isolation.html>

# Decision Tree for School Closure Decisions



# Covid Daily Health Screening Checklist

Students and staff should be screened each morning using the following questions:

1. Does the person have a temperature of 100 degrees or more?
2. Does the person have a sore throat?
3. Does the person have a cough?
4. Does the person have a loss of smell or taste?
5. Does the person have shortness of breath?
6. Has the person been in close contact with a positive COVID case?

*Your attendance at school today, signifies you answered no to each of the questions above. Should the answer to any of the questions above be yes, please stay home and keep others safe*